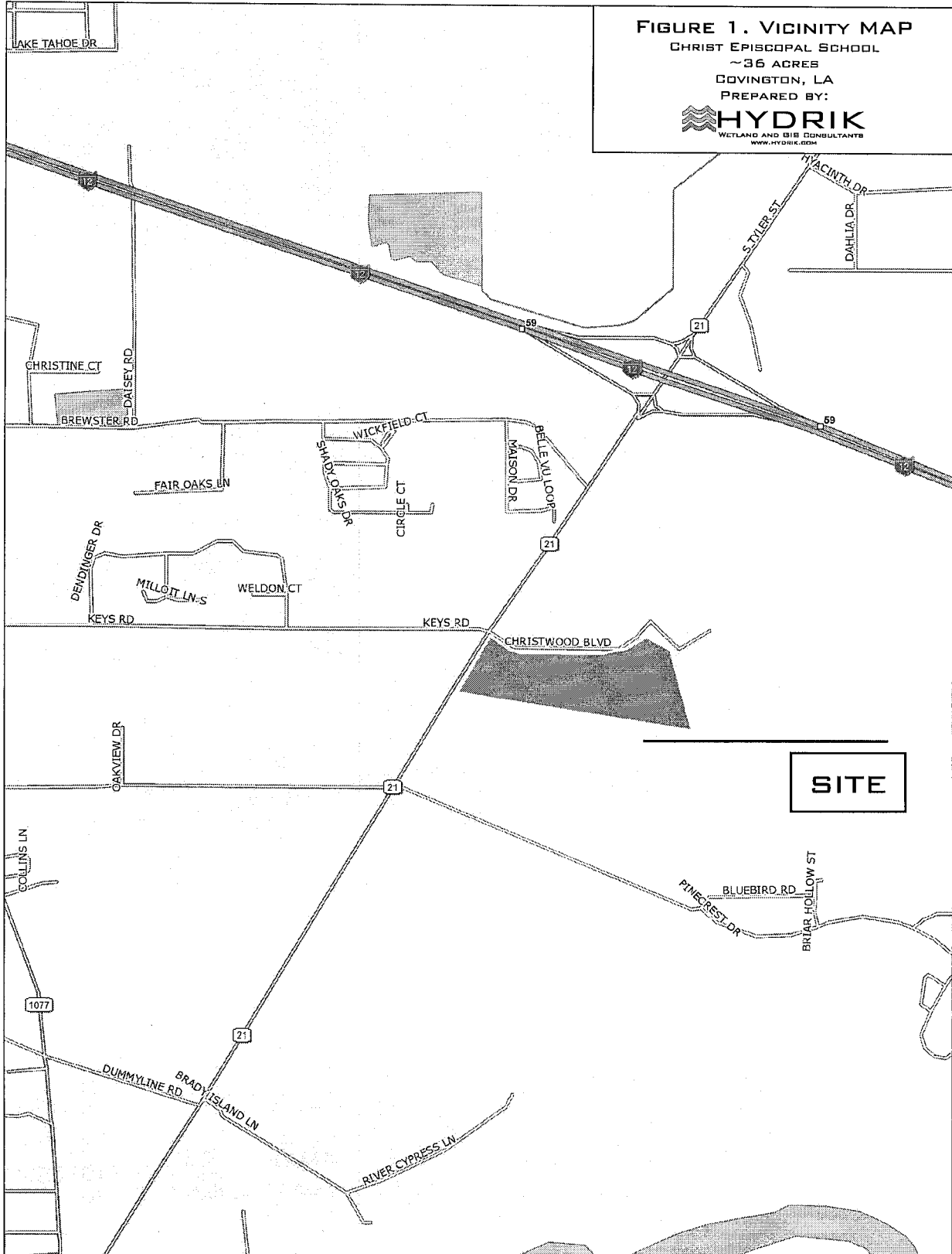
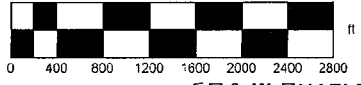


**FIGURE 1. VICINITY MAP**

CHRIST EPISCOPAL SCHOOL  
 ~36 ACRES  
 COVINGTON, LA  
 PREPARED BY:

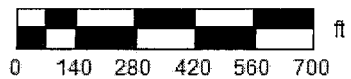
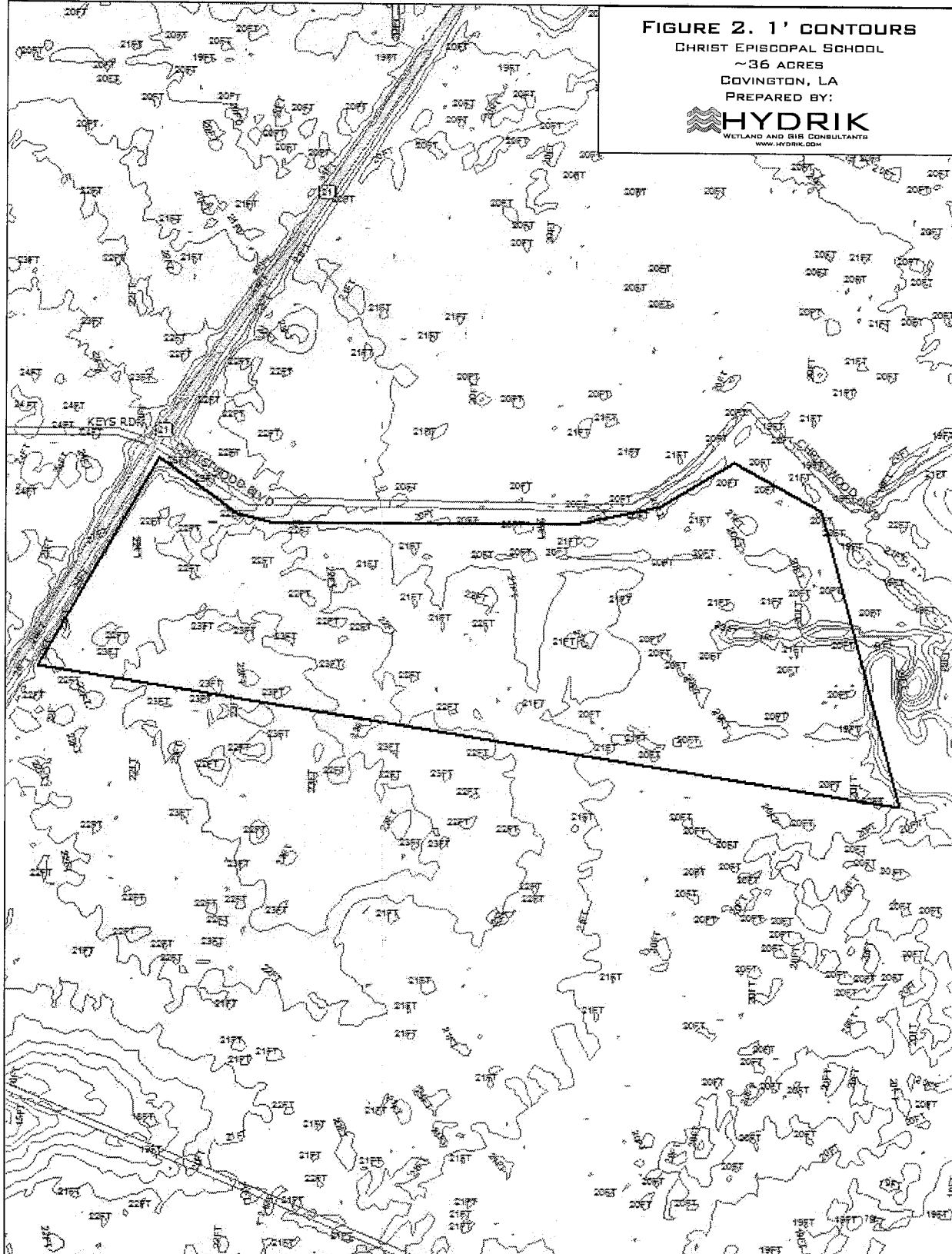


**SITE**



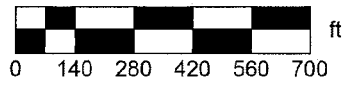
604 W. CHARLES ST.  
 HAMMOND, LA 70401  
 985 429 0333

**FIGURE 2. 1' CONTOURS**  
CHRIST EPISCOPAL SCHOOL  
~36 ACRES  
COVINGTON, LA  
PREPARED BY:



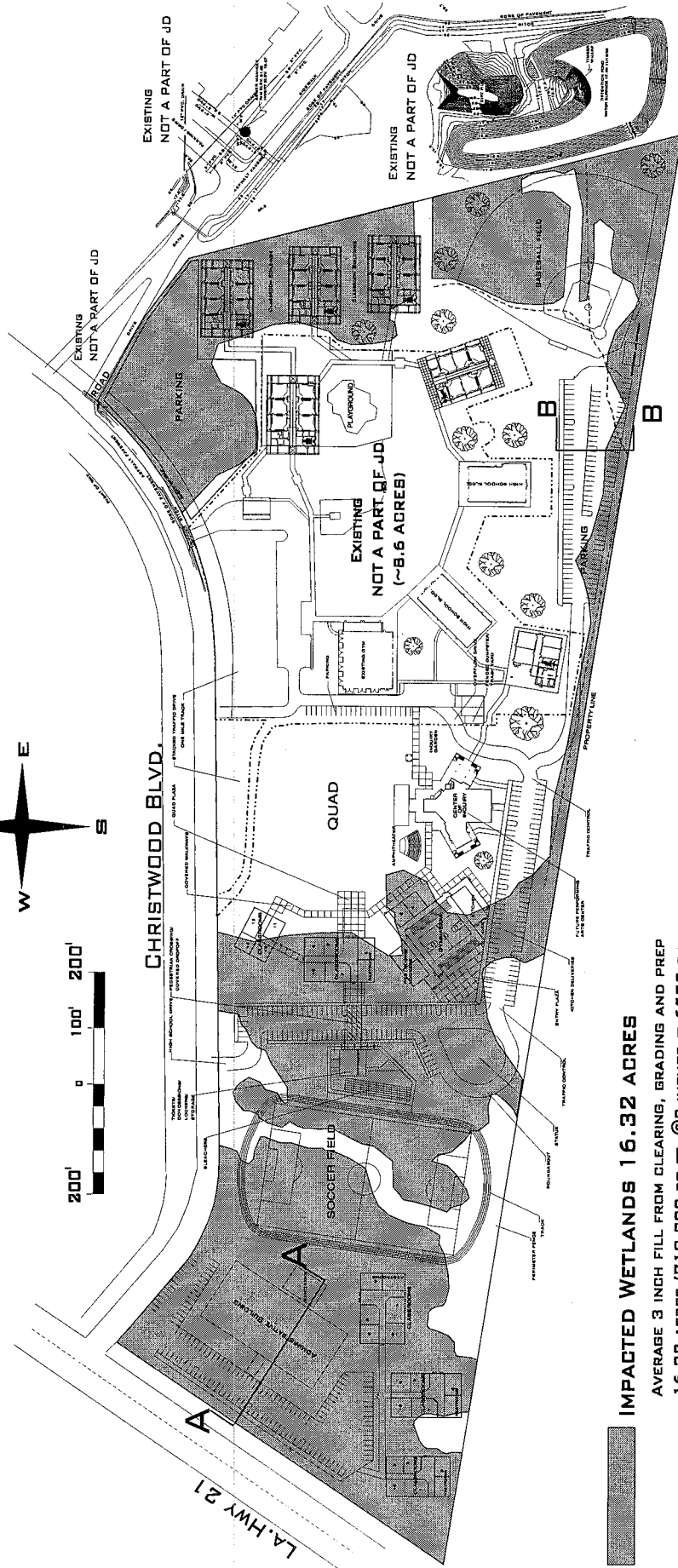
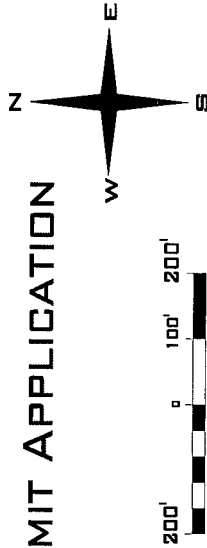


**FIGURE 3. 2004 IR**  
CHRIST EPISCOPAL SCHOOL  
~36 ACRES  
COVINGTON, LA  
PREPARED BY:  
 **HYDRIK**  
WETLAND AND GIS CONSULTANTS  
WWW.HYDRIK.COM



604 W.CHARLES ST.  
HAMMOND, LA 70401  
985 429 0333

**CHRIST EPISCOPAL SCHOOL  
 ~36 ACRES, COVINGTON, LA.  
 FACILITY EXPANSION PROJECT  
 SECTION 404 PERMIT APPLICATION**



**IMPACTED WETLANDS 16.32 ACRES**

AVERAGE 3 INCH FILL FROM CLEARING, GRADING AND PREP  
 16.32 ACRES (710,899 SQ.FT. @ 3 INCHES = 6582 C.Y. CLEAN BILT FILL

"OTHER WATERS" FILLED 1700 LINEAR FEET

AVERAGE 2 FEET WIDTH X 2 FOOT DEPTH  
 = 251 C.Y. CLEAN BILT FILL

**EXISTING ~8.6 ACRES (INCLUDED IN 36 ACRE TOTAL)**

CHRIST EPISCOPAL SCHOOL  
 COVINGTON, LA  
 ~36 ACRES

WETLAND OVERLAY AND CALCULATIONS BY:  
  
**HYDRİK**  
 WETLAND AND GIS CONSULTANTS  
 WWW.HYDRİK.COM

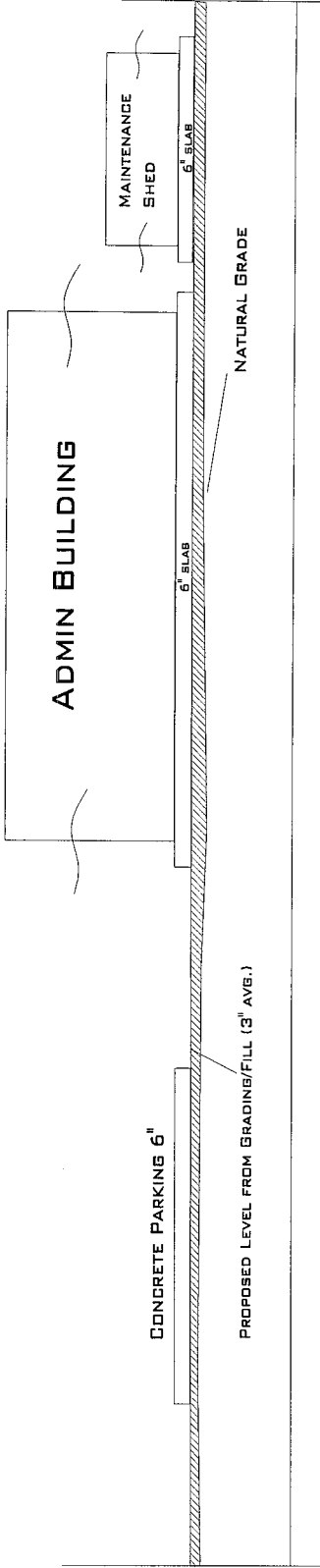
FILE: 1043C  
 FIGURE: PLAN  
 DRAWING: PVGOOD

DATE: 06 15 11  
 REV : 2  
 APPROVED: MJH

# SECTION A-A

NGVD

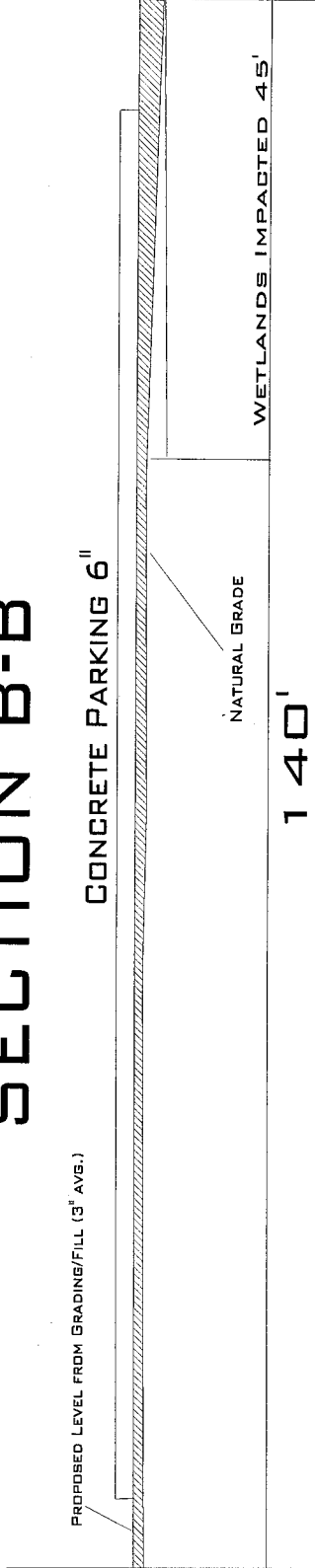
34.0'  
33.0'  
32.0'  
31.0'  
30.0'



NGVD

23.0'  
22.0'  
21.0'  
20.0'  
19.0'

# SECTION B-B



HORIZONTAL AND VERTICAL SCALES AS LABELED

CHRIST EPISCOPAL SCHOOL  
GOVINGTON, LA  
~36 ACRES

CHRIST EPISCOPAL SCHOOL  
~36 ACRES, GOVINGTON, LA.  
FACILITY EXPANSION PROJECT  
SECTION 404 PERMIT APPLICATION



FILE: 10430	DATE: 07 05 11
FIGURE: CROSS SEC	REV: 1
DRAWING: CS	APPROVED: MJH