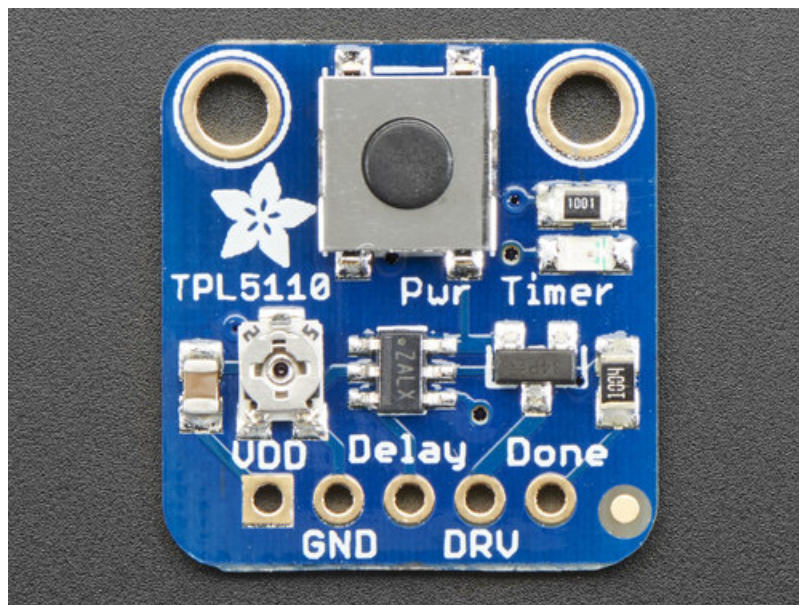


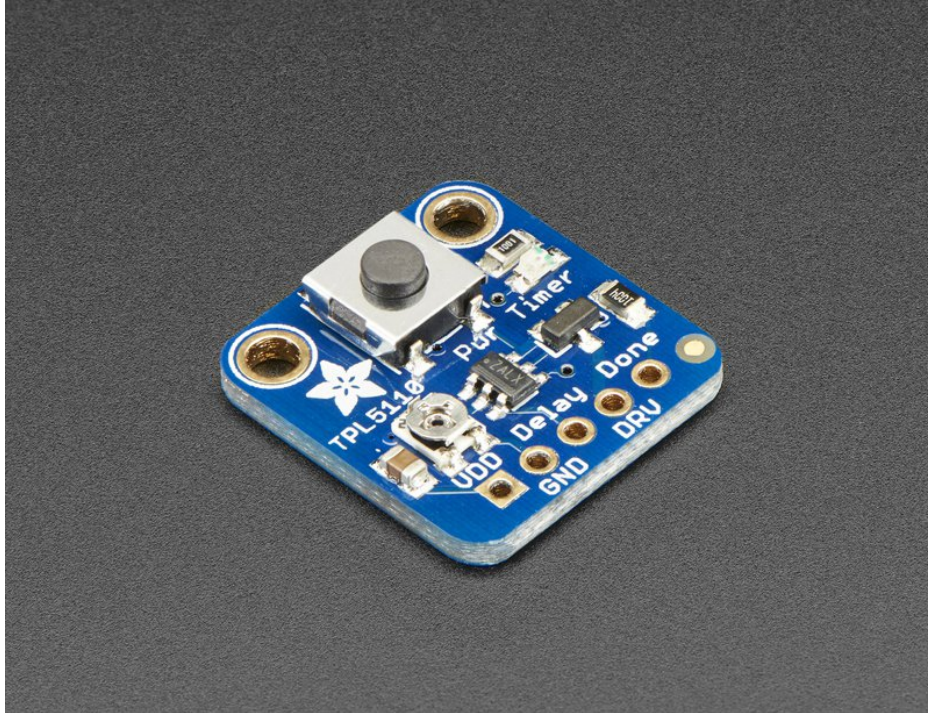
Adafruit TPL5110 Power Timer Breakout

Created by lady ada



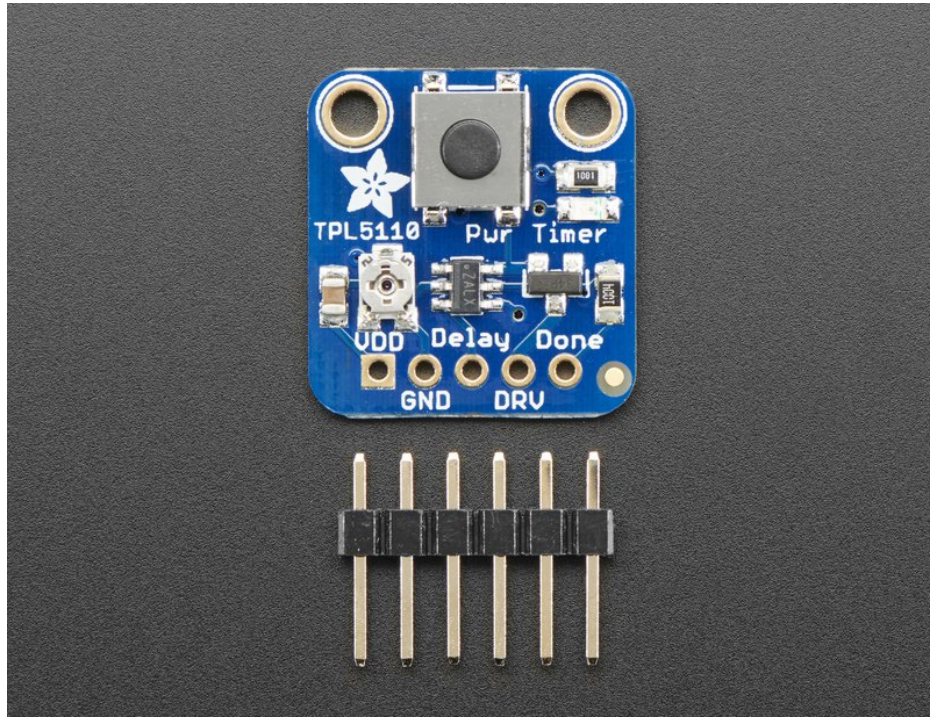
Last updated on 2019-10-02 06:41:38 PM UTC

Overview



With some development boards, low power usage is an afterthought. Especially when price and usability is the main selling point. So what should you do when it's time to turn around and make that project of yours run on a battery or solar? Sure you *could* try to hot-air that regulator off, or you could jerry-rig a relay. Or, use a 555? Ugh, the options aren't that great.

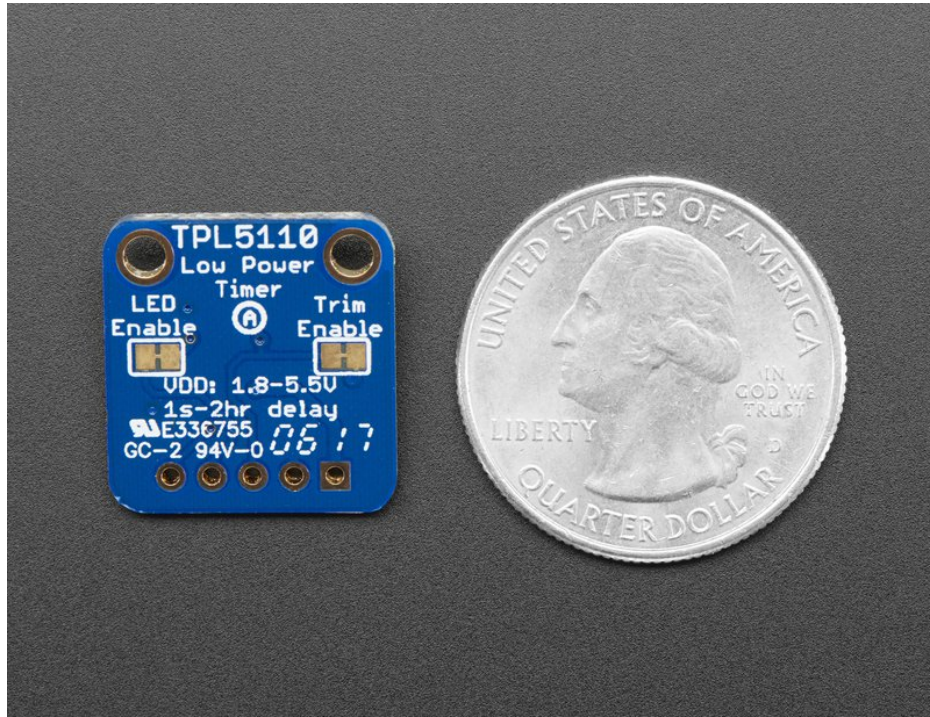
The **Adafruit TPL5110 Power Timer** is a stand-alone breakout that will turn *any* electronics into low-power electronics! It will take care of turning your project on/off using a built in timer that can vary from once-every 100ms up to once every two hours. Basically, the TPL will turn on periodically, adjustable by potentiometer or resistor, and turn on your project's power. It will then wait until a signal is received from the project to tell the TPL that it can safely turn off the power. If the TPL does not receive a signal by the set time-out, it will reset the device like a watchdog timer.



Usage is easy. First, set your desired delay by adjusting the on-board trim pot: all the way to the left is once-per-100ms and all the way to the right is once-every-2-hours. Then, connect VDD up to your 3-5V power supply and then your project's power-in to the Drive pin. Finally, select a signal pin from your project to the Done pin. In your project's code or design, just make sure that it sets the Done pin high once it is completed with its task. That's it!

While the TPL5110 is running (but the remainder of the project is de-powered) the current draw is about 20uA (according to our Monsoon Power Meter)

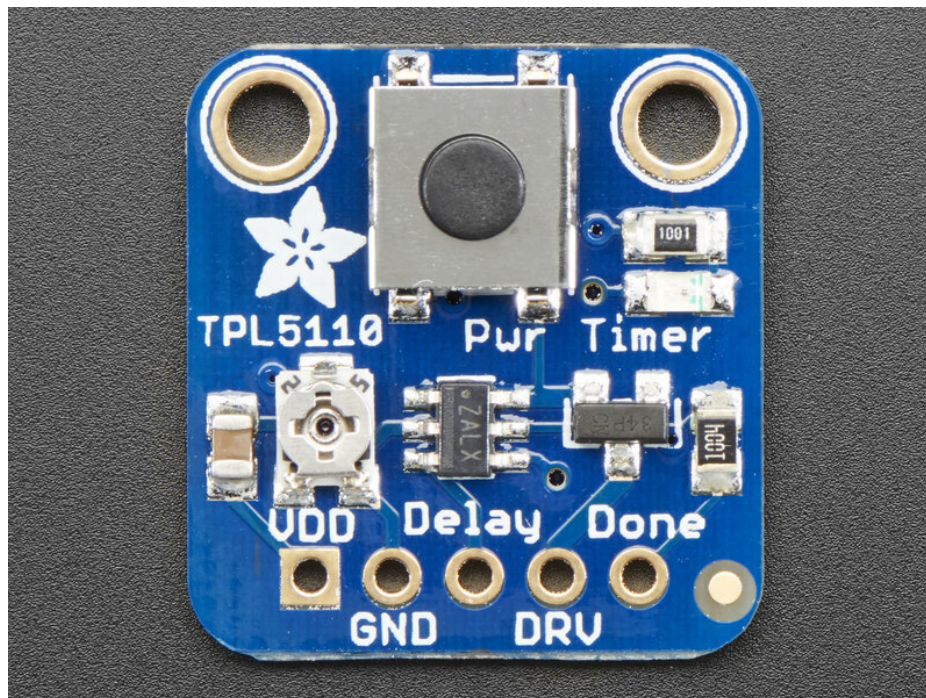
If you want to turn the device on by hand, you can also activate the TPL by pressing the onboard tactile switch (or wire your own switch to the Delay pin) See? Your power problems just got *solved!*



Comes as a fully assembled breakout board with a TPL5110 chip, all components on-board, and some header. A little light soldering is required to put it together for breadboard use.

Pinouts

There's a lot going on with this compact breakout, and many ways to do one thing so reviewing the pinouts is a really good idea!



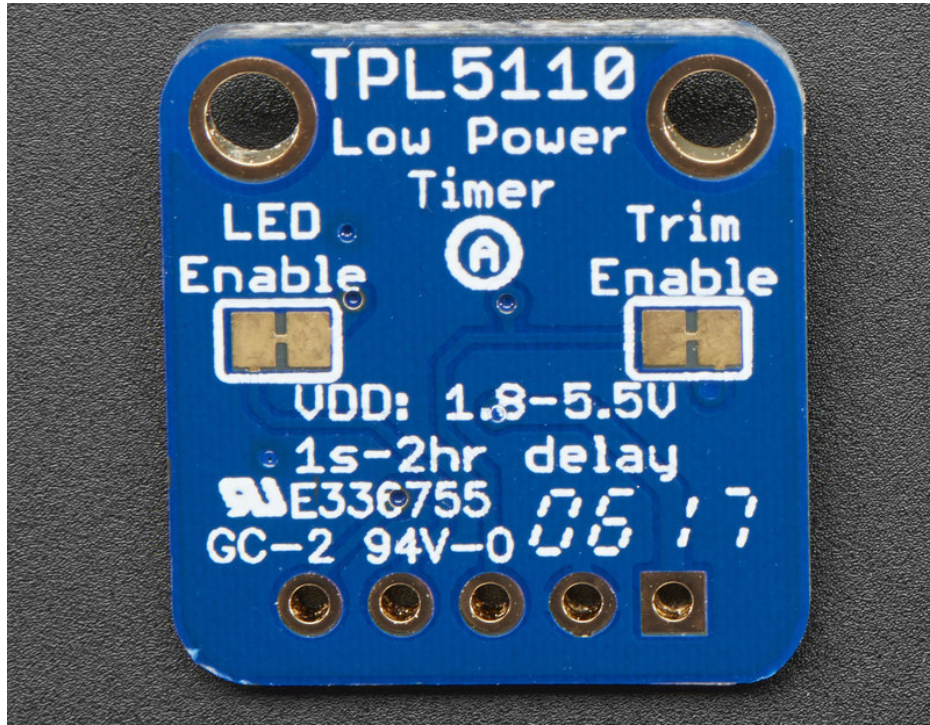
Power Pins

- **VDD** - this is the power input pin for **both** the TPL5110 chip *and* the device you want to control. Make sure this is always connected and powered. This has to be 3-5VDC so don't give it 12VDC power.
- **GND** - this is shared ground for power and signal.

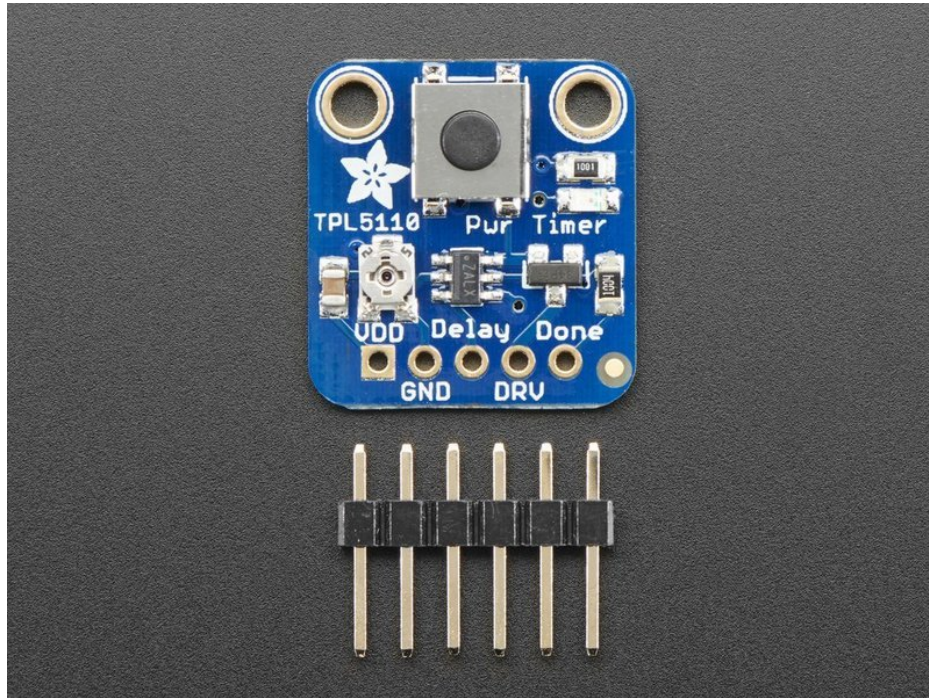
Control Pins

- **Delay** - this is the delay control pin. By adjusting the *resistance* (not voltage!) connected to this pin through to ground, you can change the delay between powerings. By default this is connected to the onboard trim potentiometer. However, you can cut the trace on the back and then connect your own resistor between **Delay** and **GND**. Also, if this pin is connected directly to VDD (say through a switch) it will activate the output instantly. Note this pin is *not* continuously sampled. You need to remove and re-apply power once you change the resistance!
- **DRV** - this is the Drive output pin, the TPL5110 will power this pin with the same voltage as from VDD when the timer activates
- **Done** - This is the signal pin *from the driven electronics* back to the TPL5110 to let it know that it is 'done' with whatever it had to do, and the TPL5110 can turn it off

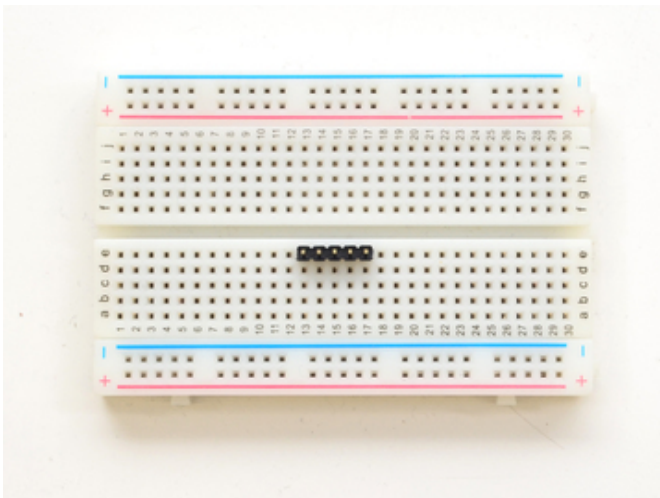
There is also an 'active' LED in the top right. This will let you know when the **DRV** pin is powered. It does draw some current so if you need ultra-low current draw, cut the trace behind the PCB!



Assembly

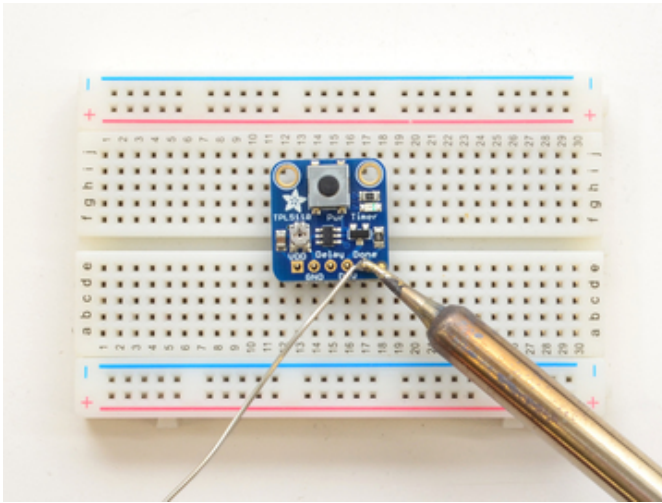


This page shows the TPL5110 but the TPL5111 procedure is identical!



Prepare the header strip:

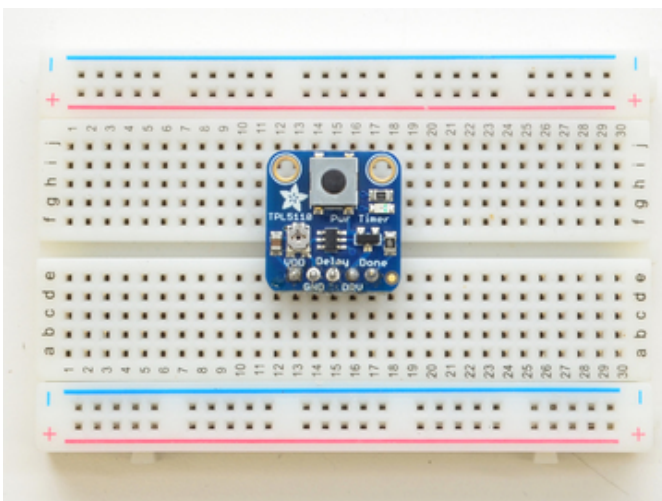
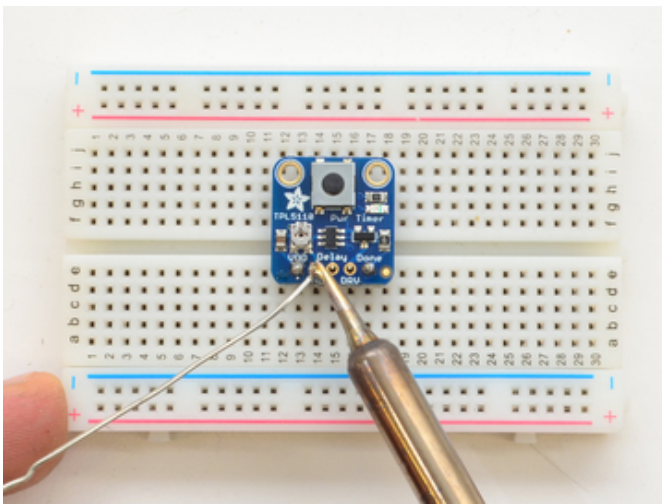
Cut the strip to length if necessary. It will be easier to solder if you insert it into a breadboard - **long pins down**



Add the breakout board and Solder!
Place the breakout board over the pins so that the short pins poke through the breakout pads

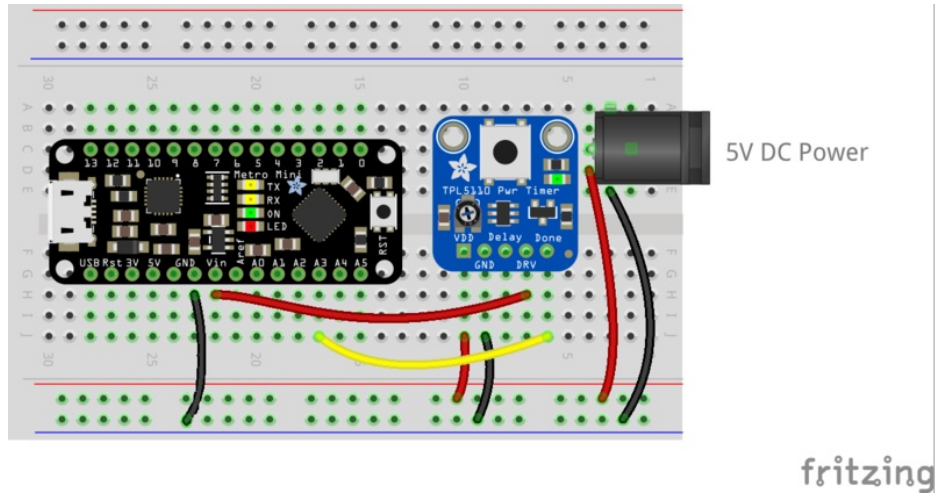
Be sure to solder all 5 pins for reliable electrical contact.

(For tips on soldering, be sure to check out our [Guide to Excellent Soldering](https://adafruit.it/aTk) (<https://adafruit.it/aTk>)).



You're done! Check your solder joints visually and continue onto the next steps

Usage



Using the TPL5110 isn't too hard but there's a few things to watch out for. First up, do not give it 9V power, use 3-5V only!

Make sure to provide the power to the **VDD** and **GND** pins. Then connect your project to the **DRV** and **GND** pin. Use a **DONE** pin from your microcontroller to signal when the TPL can disable power: when the **DONE** pin goes from low to high, that will turn off the TPL's power transistor.

In this project I'm using **A3** as the **DONE** signal pin. You can use any pin you like as long as the wiring matches your sketch. The pin is lightly pulled down so just set to an Output and High when you're done!

If the TPL *doesn't* get a DONE signal, it will reset the board with a short ENABLE toggle when the timeout is reached (e.g. before the next cycle)

Notes on the Delay Pin

The delay pin is a little more complicated than you may first think!

- First, do not connect a voltage here, instead it uses a resistor to determine the delay timing.
- Second, it does not continuously sample the resistor, it only does it *once* when power is applied. So set the delay you want, then power up the breakout.
- Third, you can instantly turn on the project by connecting **Delay** to ground. By default we have a pushbutton on board, you can connect your own button if you like
- Fourth, the resistance is not linear with the time delay, rather there is a complex algorithm to set the time based on resistance. You can check the datasheet for the precise calculation, or use this rough table:

1 Seconds	5.2 kΩ
2 Seconds	6.79 kΩ
3 Seconds	7.64 kΩ
4 Seconds	8.3 kΩ
5 Seconds	8.85 kΩ

6 Seconds	9.26 kΩ
7 Seconds	9.71 kΩ
8 Seconds	10.18 kΩ
9 Seconds	10.68 kΩ
10 Seconds	11.2 kΩ
20 Seconds	14.41 kΩ
30 Seconds	16.78 kΩ
40 Seconds	18.75 kΩ
50 Seconds	20.047 kΩ
1 Minute	22.02 kΩ
2 Minutes	29.35 kΩ
3 Minutes	34.73 kΩ
4 Minutes	39.11 kΩ
5 Minutes	42.90 kΩ
6 Minutes	46.29 kΩ
7 Minutes	49.38 kΩ
8 Minutes	52.24 kΩ
9 Minutes	54.92 kΩ
10 Minutes	57.44 kΩ
20 Minutes	77.57 kΩ
30 Minutes	92.43 kΩ
40 Minutes	104.67 kΩ
50 Minutes	115.33 kΩ
1 Hour	124.91 kΩ
1 Hour 30 Minutes	149.39 kΩ
2 Hours	170 kΩ


```

digitalWrite(DONEPIN, HIGH);
delay(1);
digitalWrite(DONEPIN, LOW);
delay(1);
}

Serial.println("Awake!");
}

// Slightly different, this makes the rainbow equally distributed throughout
void rainbowCycle(uint8_t wait) {
  uint16_t i, j;

  for(j=0; j<256*1; j++) { // 5 cycles of all colors on wheel
    for(i=0; i< strip.numPixels(); i++) {
      strip.setPixelColor(i, Wheel(((i * 256 / strip.numPixels()) + j) & 255));
    }
    strip.show();
    delay(wait);
  }
}

// Input a value 0 to 255 to get a color value.
// The colours are a transition r - g - b - back to r.
uint32_t Wheel(byte WheelPos) {
  WheelPos = 255 - WheelPos;
  if(WheelPos < 85) {
    return strip.Color(255 - WheelPos * 3, 0, WheelPos * 3);
  }
  if(WheelPos < 170) {
    WheelPos -= 85;
    return strip.Color(0, WheelPos * 3, 255 - WheelPos * 3);
  }
  WheelPos -= 170;
  return strip.Color(WheelPos * 3, 255 - WheelPos * 3, 0);
}

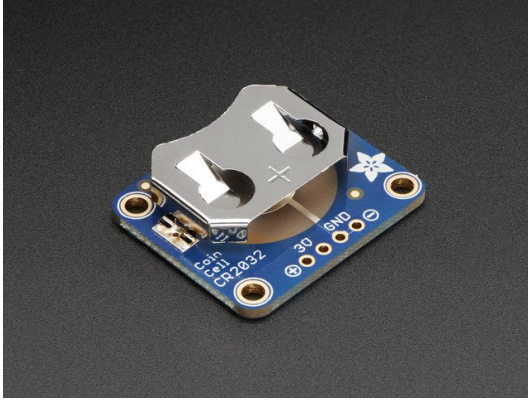
```

Video Example

You can also watch me put together a project using a prototype of this board (the shipping version has a pull-down resistor on DONE which I had to manually install in the video)

Handy Accessories

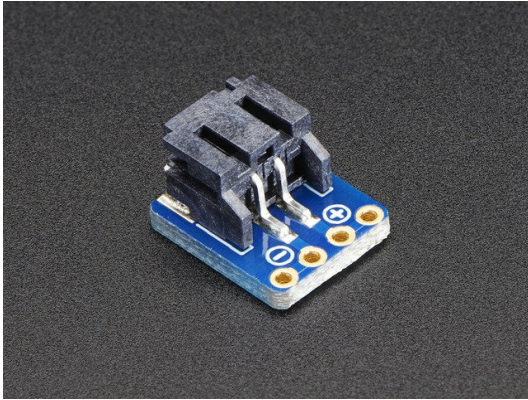
Here's some items you may find useful!



20mm Coin Cell Breakout Board (CR2032)

\$2.50
IN STOCK

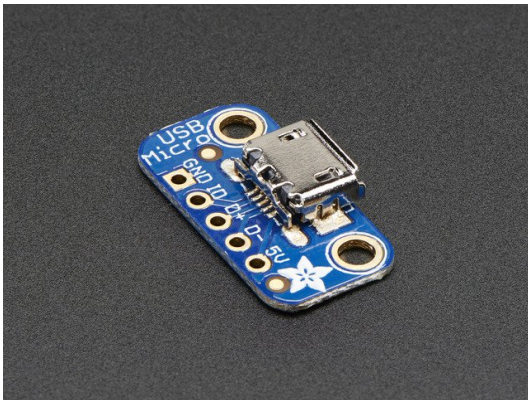
Add To Cart



JST-PH 2-Pin SMT Right Angle Breakout Board

\$1.50
IN STOCK

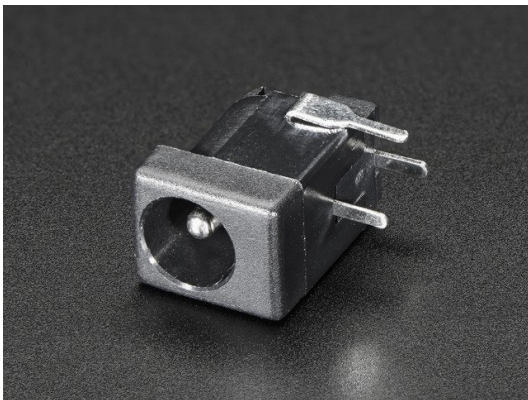
Add To Cart



USB Micro-B Breakout Board

OUT OF STOCK

Out Of Stock



Breadboard-friendly 2.1mm DC barrel jack

\$0.95
IN STOCK

Add To Cart

Downloads

Files

- [Fritzing object in Adafruit Fritzing library \(https://adafru.it/aP3\)](https://adafru.it/aP3)
- [EagleCAD PCB files on GitHub \(https://adafru.it/uFz\)](https://adafru.it/uFz)

<https://adafru.it/uFA>

<https://adafru.it/uFA>

Schematic and Fabrication Print

